

COMMANDER CLAY

SCULPTING & MODEL MAKING PORTFOLIO



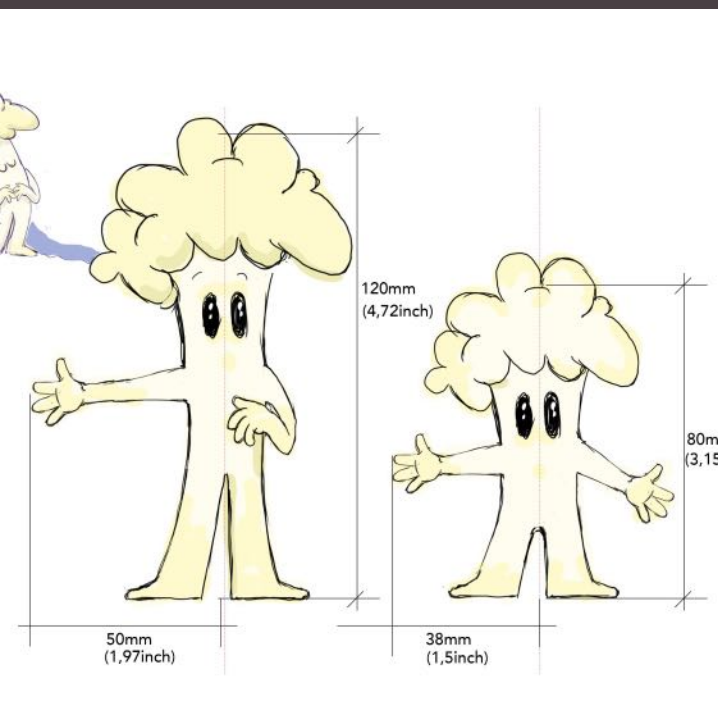
MOLD MAKING



Examples 1 & 2: CASTING HANDS FOR SILIKONE PUPPETS with two different methods

- WIRE ARMATURE MAKING with aluminium wire and brass tube for hands
- SCULPTING POSITIVE with Chavant / industrial plasticine
- SHAPE BUILDING with water based clay
- MOLD MAKING NEGATIVE with dental plaster & resin
- CASTING SILICONE POSITIVE with Dragonskin

CHARACTER DEVELOPMENT

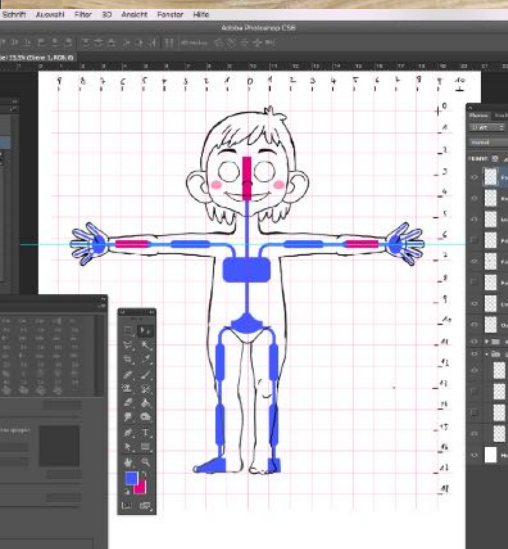


EXAMPLE: From character design to clay sculpt

(For oil based plasticine)

- Character design and development
- Sculpting positive character from industrial plasticine
- Making a press mold from resin for body part
- Making a silicon mold for head part

SCULPTING



EXAMPLE: From character design to sculpt

- ILLUSTRATING CHARACTER in Photoshop
- WIRE ARMATURE MAKING according to sketch
- SCULPTING POSITIVE with industrial plasticine
- SHAPE BUILDING with plasticine clay / jelly (agar agar)
- MOLD MAKING NEGATIVE with plaster

SCULPTING

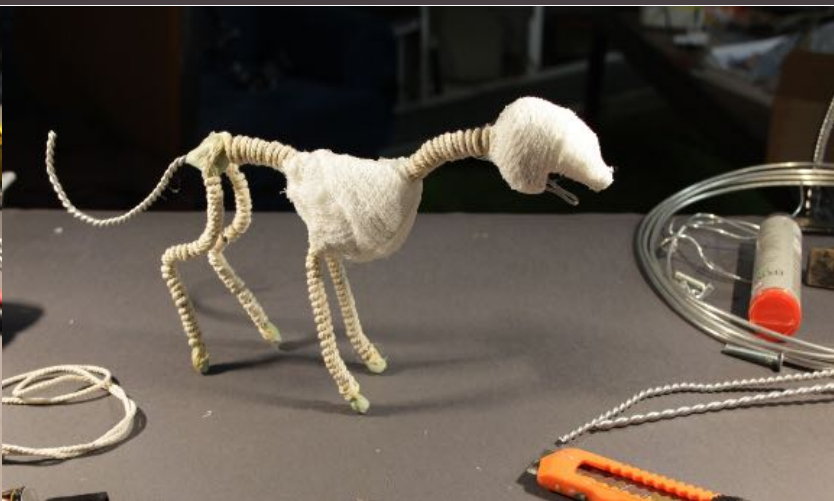
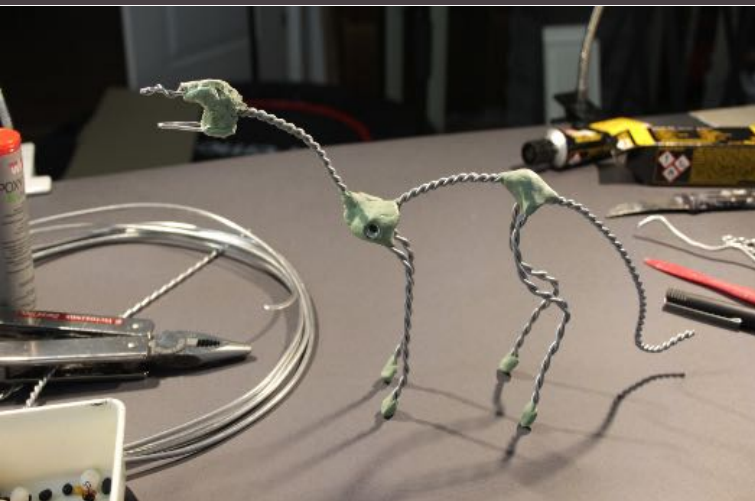


EXAMPLE: From character design to sculpt „Bear“

- ILLUSTRATING CHARACTER in Photoshop
- WIRE ARMATURE MAKING according to sketch
- SCULPTING CHARACTER with industrial plasticine
- SHAPE BUILDING with plasticine clay
- MOLD MAKING NEGATIVE with plaster

SCULPTING/ MOLD MAKING





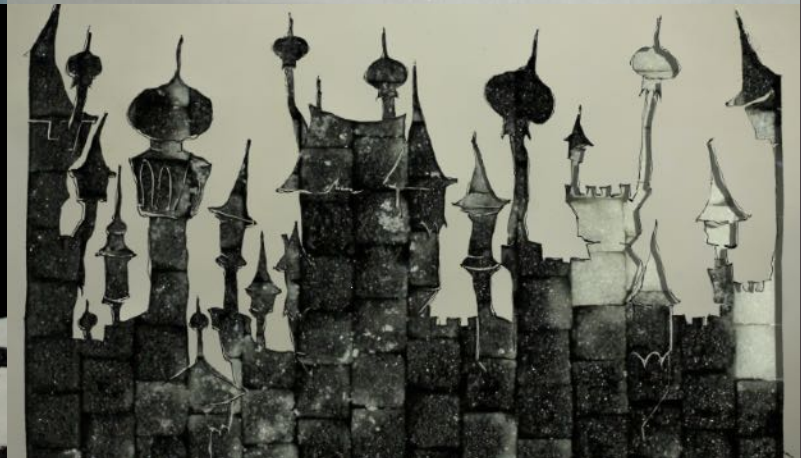
Example 1: From wire armature to clay puppet (tied down two legged)

- WIRE ARMATURE MAKING with aluminium wire, epoxy putty and aluminium foil
- PREPARING ARMATURE FOR USE WITH CLAY with cotton cord, aluminium foil or foam
- SCULPTING PUPPET with plasticine clay

Example 2: From wire armature to clay puppet (tied down four legged)

- WIRE ARMATURE MAKING with aluminium wire, epoxy putty (incl. brass tube preparation for rigging)
- PREPARING ARMATURE FOR USE WITH CLAY with cotton cord, aluminium foil and bandage
- SCULPTING PUPPET with plasticine clay

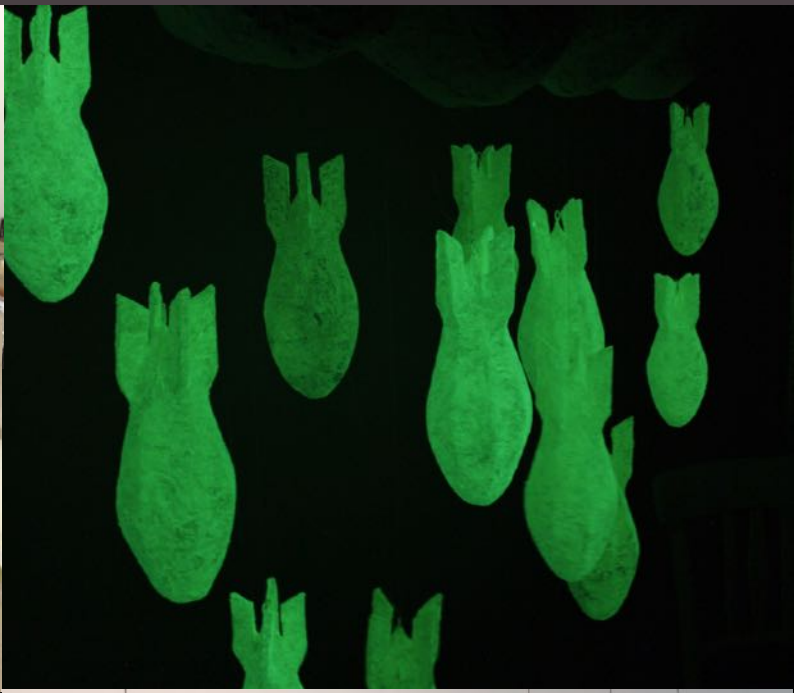
OTHERS: SCULPTING & MODEL MAKING WITH SUGAR



EXAMPLE: SCULPTING & MODEL MAKING WITH SUGAR (experimental animation "Psyriel")

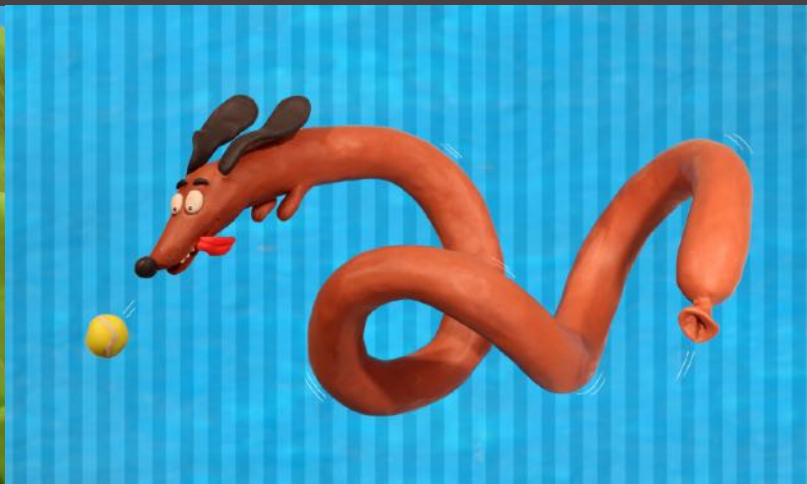
WORK IN PROGRESS:

- SCULPTING SUGAR with water and sugar
- PREPARING SET
- ILLUSTRATING CASTLES & PAPER CUT OUT
- EXPERIMENTAL VIDEO & STOP-MOTION ANIMATION with sugar, ink, oil, and water



Example: PHOTO SET FROM PAPER CLAY

- BUILDING BASE FOR OBJECTS from carton, paper and aluminium foil
- COVER FORM BASE WITH PAPER MACHE
- COVER PAPER MACHE WITH PAPER CLAY
- PAINTING OBJECTS (partly night glowing)



EXAMPLES: models, characters, and dioramas made from plasticine clay, 2021-2022.

WORKING PROCESS:

- Sketching characters/scenes.
- Making armatures with aluminum wire, epoxy putty, and aluminum foil.
- Building sets (base) with cardboard, paper clay, foam, and aluminum foil.
- Sculpting and model making with plasticine clay.
- Illuminating and photographing sets.
- Digital editing in Photoshop.

If you want to see more of my Clay Illustrations please go to www.karin-csernohorski.com/illustration





EXAMPLES: "THAT'S THE BEAT" stop-motion music video for THE INCREDIBLE STAGGERS, 2010.

WORK PROCESS:

- Building a simple multiplane system.
- Storyboarding.
- Character and set design.
- Making wire armatures for multiplane use.
- Fabricating puppets from plasticine clay.
- Building props and sets.
- Animating music synchronization and lip sync (without replacements).
- Post-production.

STOP MOTION VIDEO ART

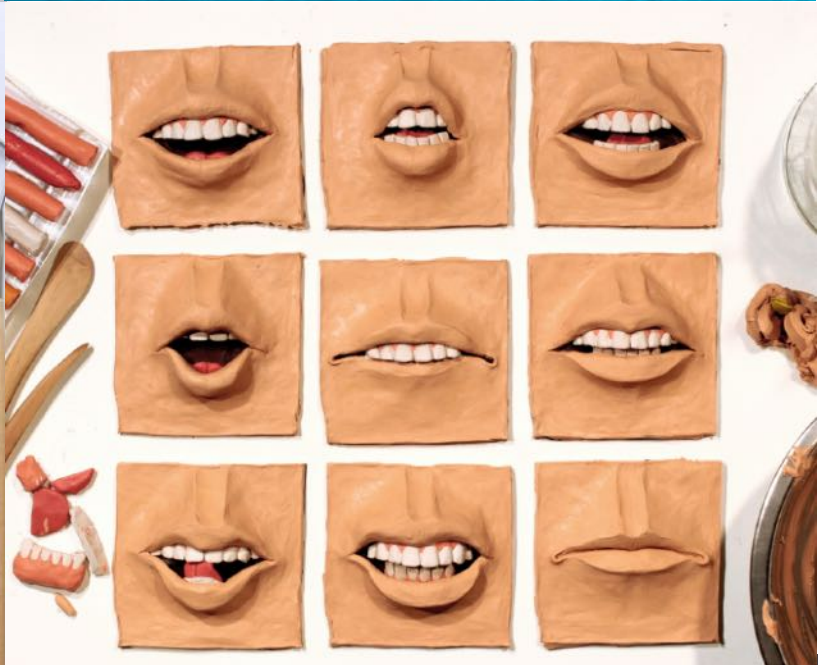


Examples: STOP-MOTION-ANIMATION & MODEL MAKING - "MIND MANIPULATING MACHINES"

- FILM STILL: "PERSONAL HEALING PROGRAM" (STOP-MOTION-VIDEO-LOOP)
- FILM STILL: "COMA" (STOP-MOTION-VIDEO-LOOP)
- MODEL MAKING, MOLD MAKING, FORM CASTING, SCULPTING
- ANIMATION OF DIFFERENT LIQUID SUBSTANCES / LABORATORY
- LIP SYNC ANIMATION
- VIDEO EDITING

The so-called "Mind Manipulating Machines" are stop-motion animated, one-scene video loops for art festivals and exhibitions. I regularly produce different "MIND MANIPULATING MACHINES".

REPLACEMENT MOUTH SHAPES FOR LIP SYNC ANIMATION



EXAMPLES: DIFFERENT SETS OF REPLACEMENT MOUTH SHAPES

- GREEN: Freely modeled forms for lip-sync animation.
- RED: Freely modeled female lip shapes for lip-sync animation.
- WHITE AND SKIN TONE: Realistic replacement sets for lip-sync animation.
- Partly built with plaster negative molds.